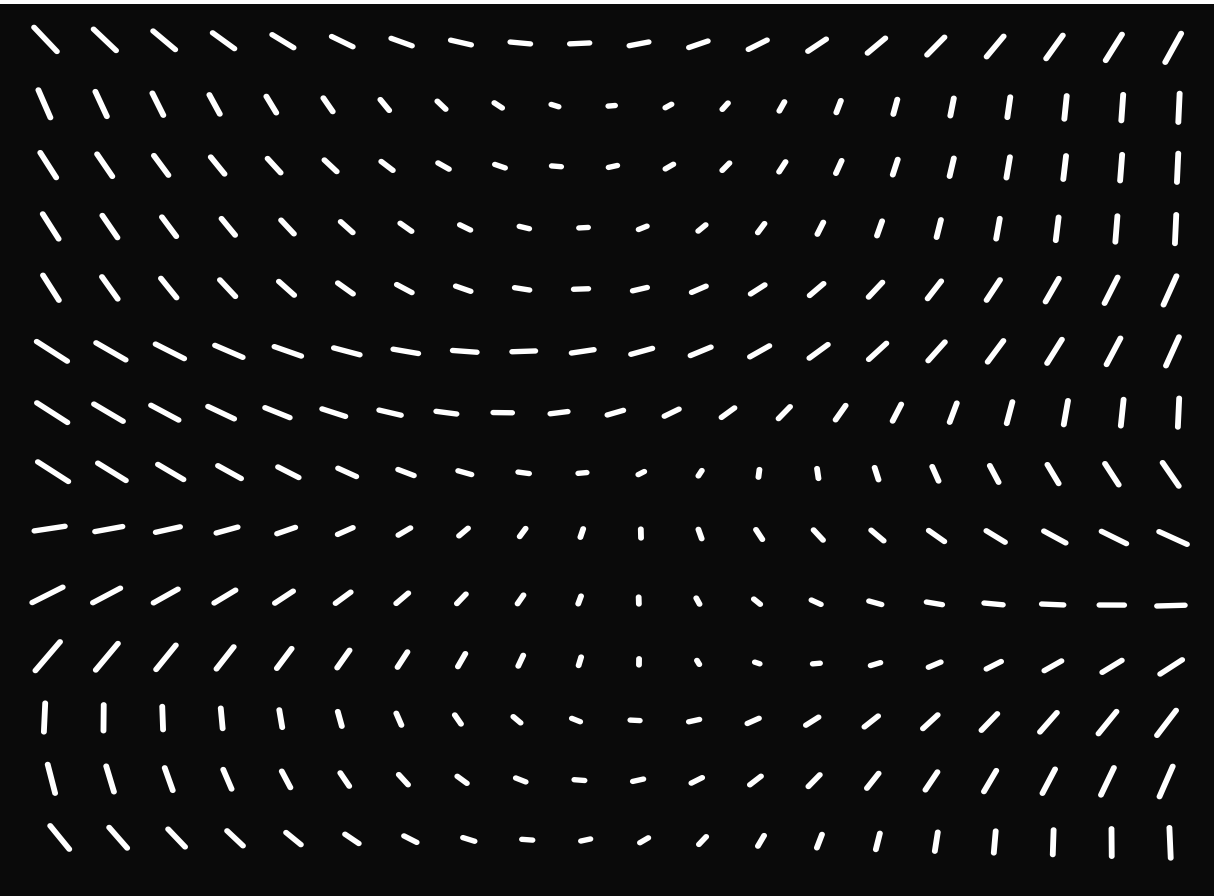


SK

scottnightmusic.com

 Music



BLUES LICKS

scottnightmusic.com

HAMMER ON & PULL OFFS

1 3 1 3 1 (H H) | 3 1 3 1 3 (P P) | 3 4# 3 1 3 (H P) | 5 7 5 7 5 (H P P)

PENTA SLIDE

3 5 3 5 7 (sl.) | 5 7 5 7 9 (sl.) | 8 10 8 10 12 (sl.) | 12 10 8 10 8 (sl.)

STRING BENDS

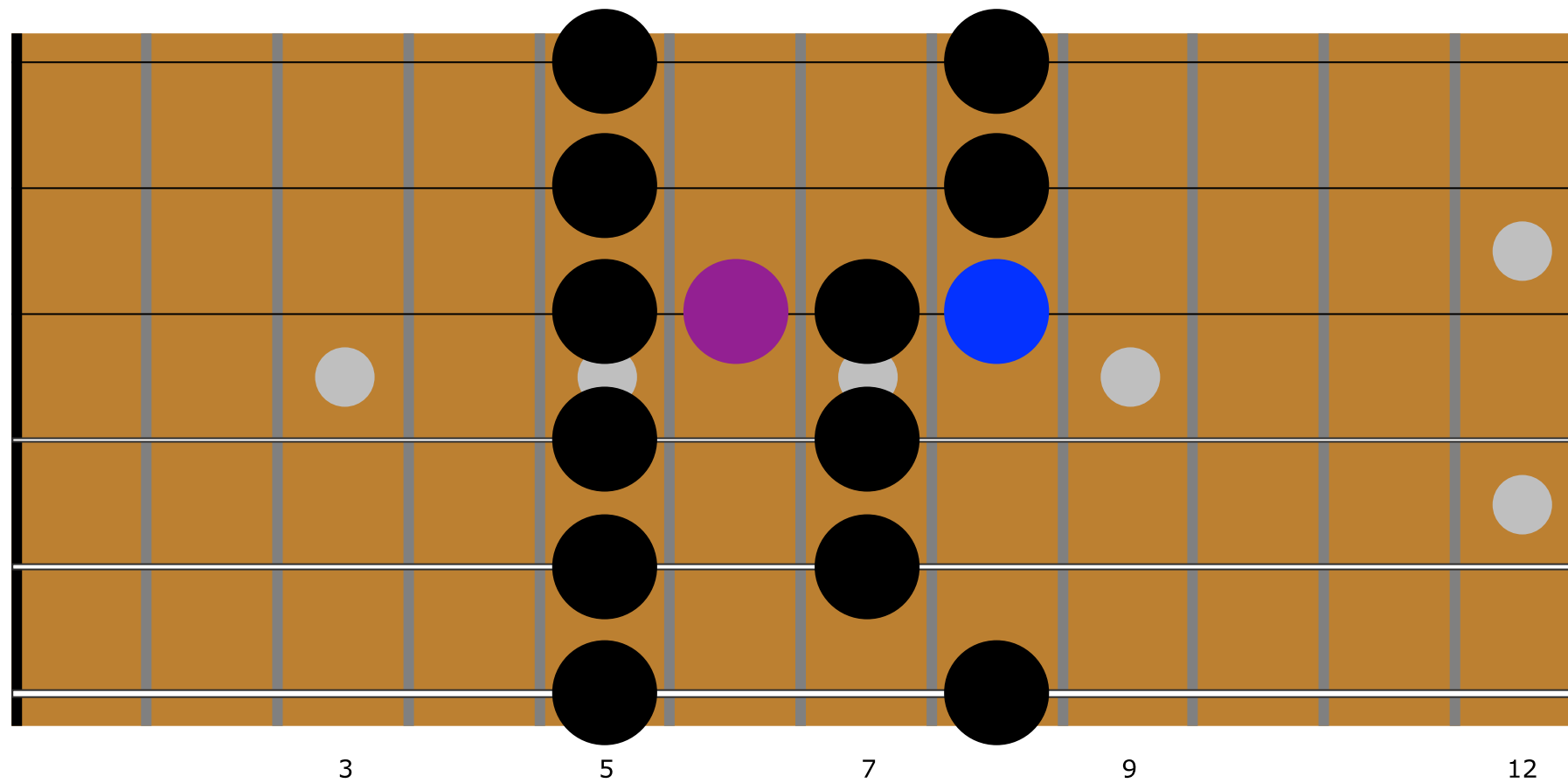
9 7 5 7 5 (sl.) | 7 5 3 5 3 (sl.) | 7 5 (1/4 bend) | 5 7 (1/4 bend)

COMBO W/ BENDS

7 5 (1/2 bend) | 8 5 (1/2 bend) | 8 5 (full bend) | 7 5 5 8 5 (1/2 bend, P) | 8 5 8 5 (P) | 7 5 8 5 (1/2 bend, P) | 6 5 8 5 (1/2 bend, P)

8 5 8 5 (P) | 7 5 8 5 (1/2 bend, P) | 8 5 7 5 (1/2 bend, P) | 6 5 8 5 (1/2 bend, P)

A BLUESY PATTERN



Purple Haze (Intro)

Jimi Hendrix
scottnightmusic.com

Measures 1-4 of the guitar intro. The top staff is in treble clef, 4/4 time, with a key signature of one sharp (F#). The bottom staff is a guitar tablature. Measure 1: Treble clef has notes G4 (1), A4 (3), B4 (3), C5 (1). Tablature has 6, 8, 6, 8. Measure 2: Treble clef has notes G4 (1), A4 (3), B4 (3), C5 (1). Tablature has 6, 8, 6, 8. Measure 3: Treble clef has notes G4 (1), A4 (3), B4 (3), C5 (1), then a triplet of G4, A4, B4. Tablature has /9, 7, 8, 7. Measure 4: Treble clef has notes G4 (1), A4 (3), B4 (3), C5 (1), then a triplet of G4, A4, B4. Tablature has /5, 5, 0, 5, 7, 7, 5.

Measures 5-8 of the guitar intro. Measure 5: Treble clef has notes G4 (1), A4 (3), B4 (3), C5 (1), then a triplet of G4, A4, B4. Tablature has /9, 7, 8, 7. Measure 6: Treble clef has notes G4 (1), A4 (3), B4 (3), C5 (1), then a triplet of G4, A4, B4. Tablature has /5, 5, 0, 5, 7, 7, 5. Measure 7: Treble clef has notes G4 (1), A4 (3), B4 (3), C5 (1), then a triplet of G4, A4, B4. Tablature has 5, 7, 7, 5. Measure 8: Treble clef has notes G4 (1), A4 (3), B4 (3), C5 (1), then a triplet of G4, A4, B4. Tablature has 5, 0, 0, 3, 0.

E7#9

G

A

P

Measures 9-12 of the guitar intro. Measure 9: Treble clef has notes G4 (1), A4 (3), B4 (3), C5 (1), then a triplet of G4, A4, B4. Tablature has 5, 7, 5, 7, 5, 0. Measure 10: Treble clef has notes G4 (1), A4 (3), B4 (3), C5 (1), then a triplet of G4, A4, B4. Tablature has /9, 7, 7, 9. Measure 11: Treble clef has notes G4 (1), A4 (3), B4 (3), C5 (1), then a triplet of G4, A4, B4. Tablature has 8 8, 7 7, 6 6, 7 7. Measure 12: Treble clef has notes G4 (1), A4 (3), B4 (3), C5 (1), then a triplet of G4, A4, B4. Tablature has 3 3, 3 3, 3 3, 5 5, 5 5, 5 5, 5 5, 5 5, 5 5, 5 5.

E7#9

G

A

P

Measures 13-14 of the guitar intro. Measure 13: Treble clef has notes G4 (1), A4 (3), B4 (3), C5 (1), then a triplet of G4, A4, B4. Tablature has 8 8, 7 7, 6 6, 7 7, 7 7, 7 7. Measure 14: Treble clef has notes G4 (1), A4 (3), B4 (3), C5 (1), then a triplet of G4, A4, B4. Tablature has 3 3, 3 3, 3 3, 5 5, 5 5, 5 5, 5 5, 7 7, 5 5.

Purple Haze

scottknightmusic.com

Jimi Hendrix

E7#9 **F#5** **D5**

1 2

H H H P sl. H P sl. sl. full

TAB 16 18 16 18 16 18 16 16 14 14 16 14 14 13 13 14 14 14 X X 14 12 14 12 14

E7#9 **F#5** **D5**

3 4

sl. sl. sl.

TAB 12 11 12 11 11 14 12 12 14 12 11 12 14 16 14 16

E7#9 **F#5** **D5**

5 6

H P sl. sl. sl. sl. sl. sl.

TAB (16) 14 16 14 12 14 14 16 12 16 12 16 12 16 12 12 14 12 14

E7#9 **F#5** **D5**

7 8

H P H P H P H P full full full full full

TAB 11 12 14 12 14 12 15 12 14 15 14 (14) 16 16 16 14 15 14 14